

**a** **alina** **homecare**  
*Disability Support*



**Supported Living Service  
Eastleigh, Hampshire**

# About Alina

Alina Homecare passionately believes that care is best when you're at home. We can help your children, your dad, your mum, your neighbour or yourself to live independently in familiar homely surroundings and be part of the local community.

## **a** alina homecare *Care at Home*

Home care gives elderly people options to stay in control of their lives and independence for as long as needed. We deliver high quality care that is safe, compassionate and personalised, including live-in care for reassurance night and day.

## **a** alina homecare *Disability Support*

We support people with a range of learning disabilities, including autism and mental health needs who live independently and in supporting living accommodation. Everyone we support receives the specialist care they need and deserve.

## **a** alina homecare *Complex Care*

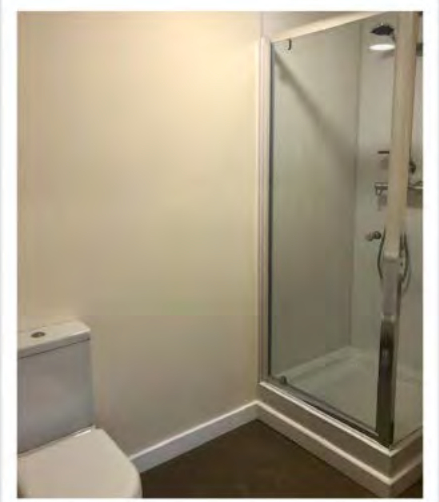
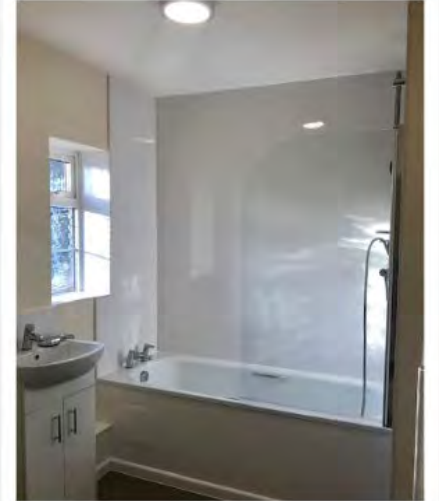
Our complex health care teams support people with a wide range of health conditions. These may be physical or emotional and present a variety of needs which require specialist nurse led support.



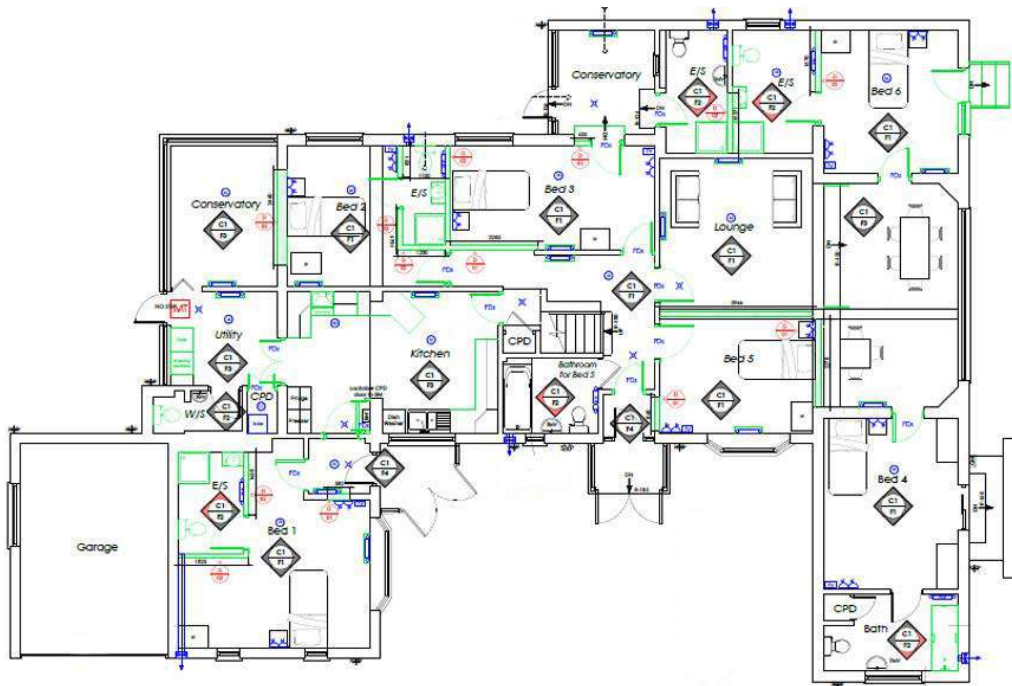
# Supported Living Service - Eastleigh, Hampshire



This substantial and spacious detached 6 bedroomed property is largely on one level with independent living opportunities within. It is situated in a residential area within walking distance of many local shops. Eastleigh town offers a range of retail, leisure and higher education facilities. The property is managed by the appointed housing association.



Call us: 07823 329320  
[enquiries@alinahomecare.com](mailto:enquiries@alinahomecare.com)



## Ground Floor

6 double bedrooms, 5 with en-suites

Double bedroom with separate bathroom

Large lounge/diner

Additional quiet lounge/conservatory

Kitchen with separate utility room & WC

## Outside

Front & rear gardens

Garage

Call us: 07823 329320  
[enquiries@alinahomecare.com](mailto:enquiries@alinahomecare.com)